

Kiosk Setup

10.03.2018



| | |
|--|-----------|
| What is Kiosk? | 2 |
| Goals | 2 |
| Requirements | 3 |
| Computer | 3 |
| Internet Connection | 3 |
| Display | 3 |
| Client Key | 3 |
| Setting Up a Kiosk Display | 4 |
| Configuring the Operating System | 4 |
| Setting Up Automatic Logon | 4 |
| Changing the Power and Display Settings | 5 |
| Configuring the Kiosk | 8 |
| Installing Google Chrome | 8 |
| Creating a Shortcut to Kiosk | 9 |
| Example Shortcut Target | 12 |
| Disabling Notifications in Google Chrome | 12 |
| Starting Kiosk Automatically when the Computer Boots | 13 |
| Trying it Out | 15 |
| Helpful Tips and Tricks | 16 |
| Resolving an Undefined Method 'Key' Error | 16 |
| Exiting a Running Kiosk | 16 |
| Preventing Kiosk from Starting Automatically | 16 |
| Disabling Automatic Logon | 16 |
| Support | 17 |

What is Kiosk?

Kiosk is an application used for creating digital signage that includes real-time Winnipeg Transit schedule information alongside custom media such as maps or custom images suited to your particular location.



An Example of a Winnipeg Transit Kiosk

Goals

The goals of this document are to help you setup a Kiosk by:

1. Configuring Microsoft Windows to log on automatically and prevent the display from going to sleep or activating a screensaver.
2. Ensuring Google Chrome opens the Kiosk display automatically when the computer starts (or restarts).
3. Preventing Google Chrome from displaying Popups or Notifications over the Kiosk display

Requirements

In order to run a Kiosk Display there are some necessary prerequisites that need to be met. You will need to have the following:

Computer

You will need to have a computer running Microsoft Windows 10 in order to access Kiosk. A user account with Administrative privileges is also required in order to configure Automatic Login.

You may be able to set up Kiosk on a Mac or Linux PC, but this is not supported and will not be covered in this document.

Internet Connection

You will need an internet connection to connect to the Kiosk application and download real-time schedule updates from Winnipeg Transit

Display

Your computer will need to be connected to a display, generally this is a large format display such as a TV connected with HDMI.

Client Key

Your “Client Key” is an alphanumeric key that is provided by Winnipeg Transit. The Client Key is required in order to setup and use your Kiosk. This key tells your computer which display to load and is unique to each Kiosk Display.

Setting Up a Kiosk Display

Configuring the Operating System

Below are the steps for setting up *Automatic Logon* and configuring your *Power and Display* settings. This will ensure that your kiosk will start automatically when the computer is turned on and prevent the display from going to sleep or activating the screensaver.

Setting Up Automatic Logon

Automatic Logon will log into your user account for the computer automatically when the computer is turned on. The easiest way to set this up in Windows 10 is to use a tool provided by Microsoft.

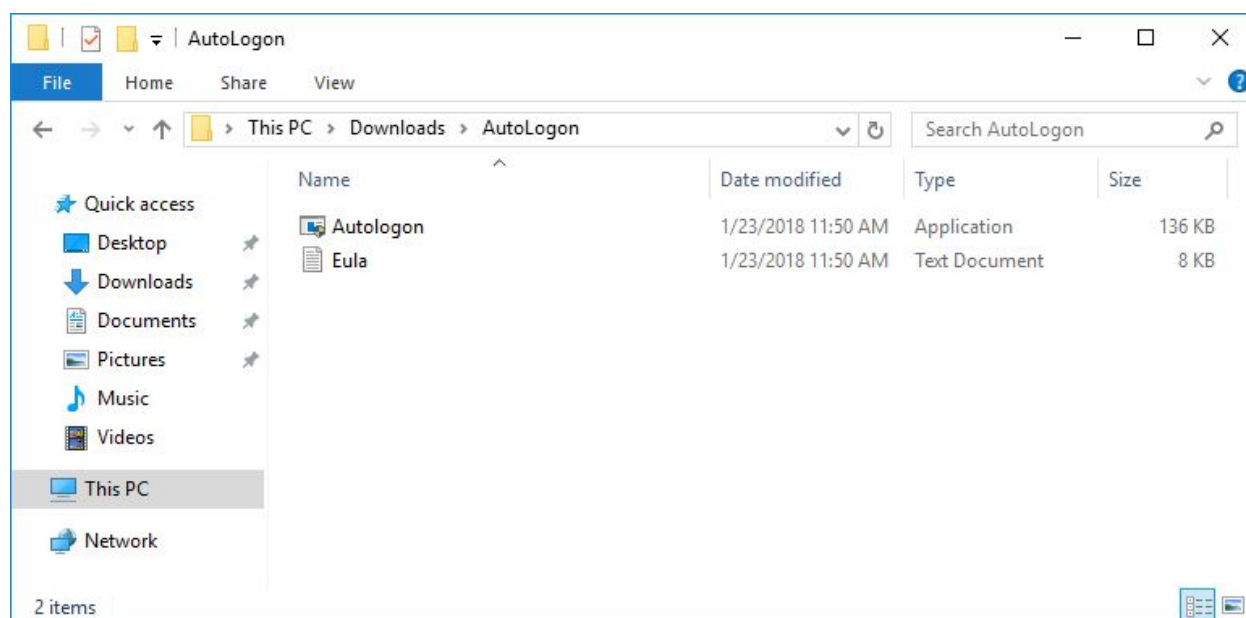
1. Downloading the Autologon Tool

The Autologon tool can be downloaded from microsoft using the link below:

<https://docs.microsoft.com/en-us/sysinternals/downloads/autologon>

2. Extract the Archive Contents

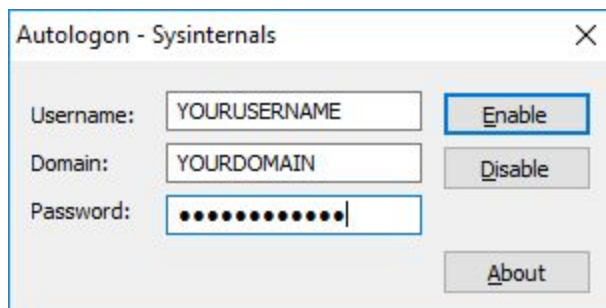
After downloading the zip file, extract the contents to a directory of your choosing and you will see two files:



Contents extracted from the zip file containing the Microsoft AutoLogon tool

3. Using the Autologon Tool

Run the Autologon application and enter the credentials for your Windows account



AutoLogon application with credentials

After entering your credentials, you can click the *Enable* button to configure automatic login for this user.

If you were to reboot your computer at this point, the user account you defined here will be logged in automatically.

Changing the Power and Display Settings

You will want to prevent your computer from going to sleep and either turning off the display or activating a screensaver after some period of inactivity. This can be done from the Windows 10 Control Panel:

1. Open the Control Panel

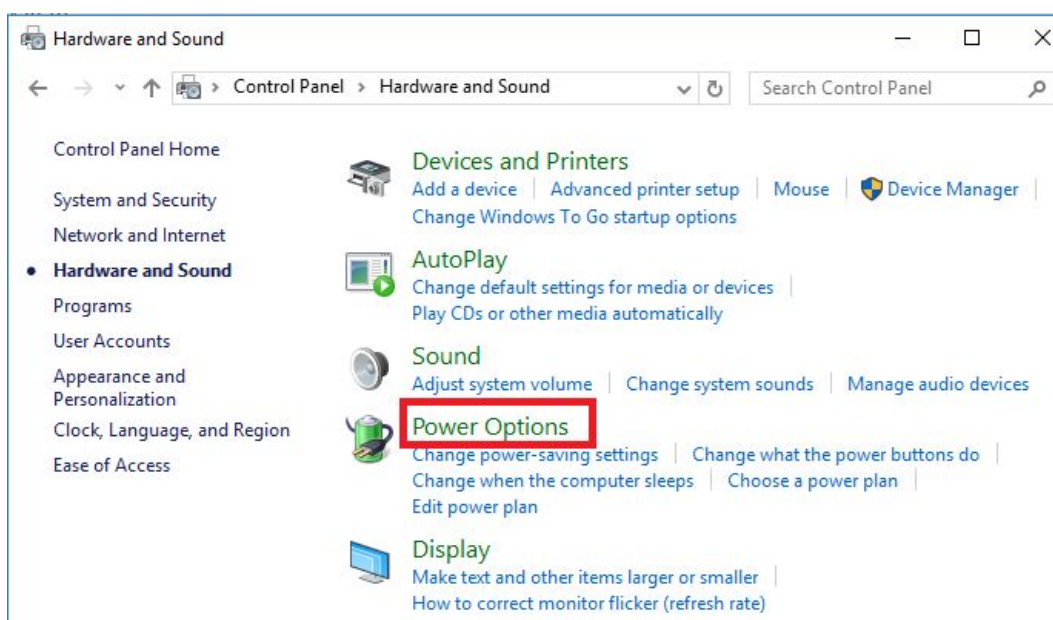
Click the bottom-left Start button to open the Start Menu, type “*control panel*” in the search box and select **Control Panel** in the results.

2. Access the Hardware and Sound Settings

Click on the **Hardware and Sound** link next to the printer icon

3. Open the Power Options

Click on the **Power Options** link as seen in the image below



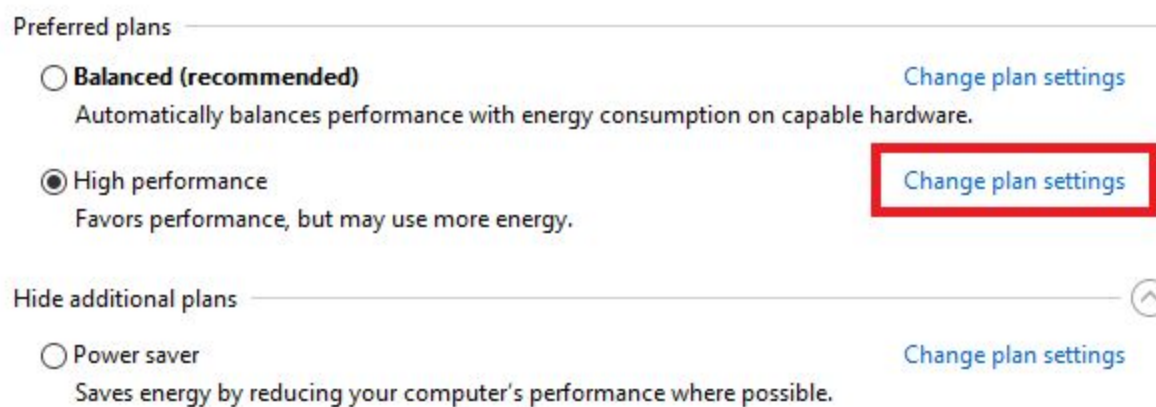
Power Options in the Control Panel

4. Change Plan Settings

Select the *High performance* plan and then select **Change plan settings** to customize your plan

Choose or customize a power plan

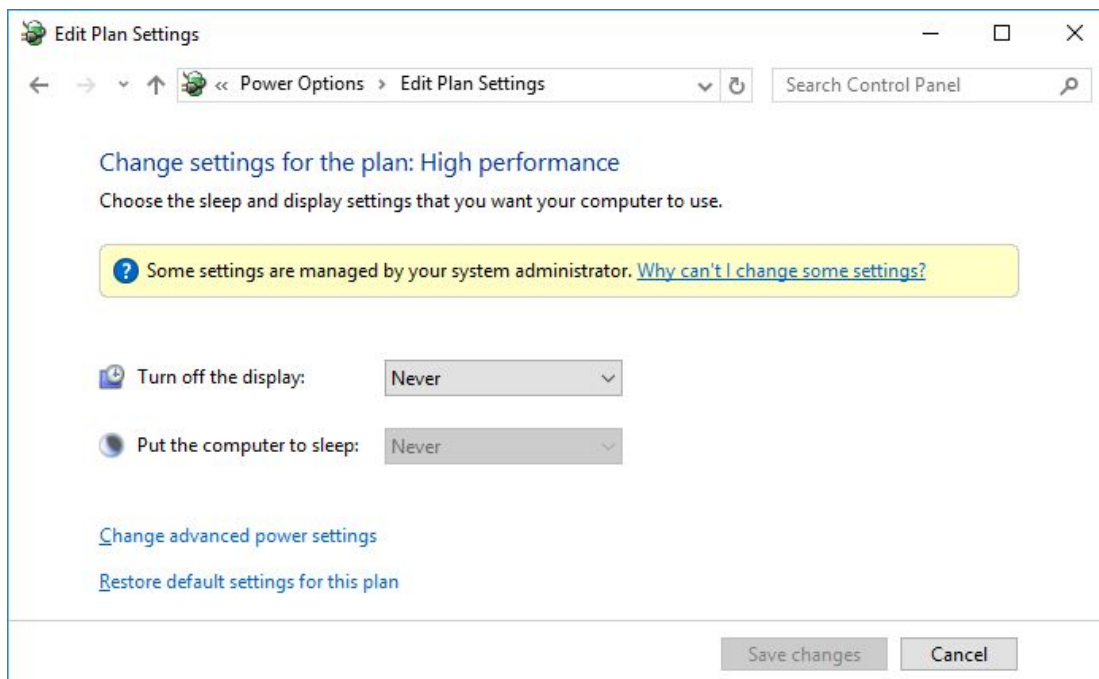
A power plan is a collection of hardware and system settings (like display brightness, sleep, etc.) that manages how your computer uses power. [Tell me more about power plans](#)



Click on the Change plan settings link from the Power Plan Menu

5. Set 'Turn off the Display' to 'Never'

Click on 'Choose when to turn off the display' and then set the value for 'Turn off the Display' to 'Never', and when you are done click 'Save Changes'



Edit the Power Options to Prevent the Display from Turning Off

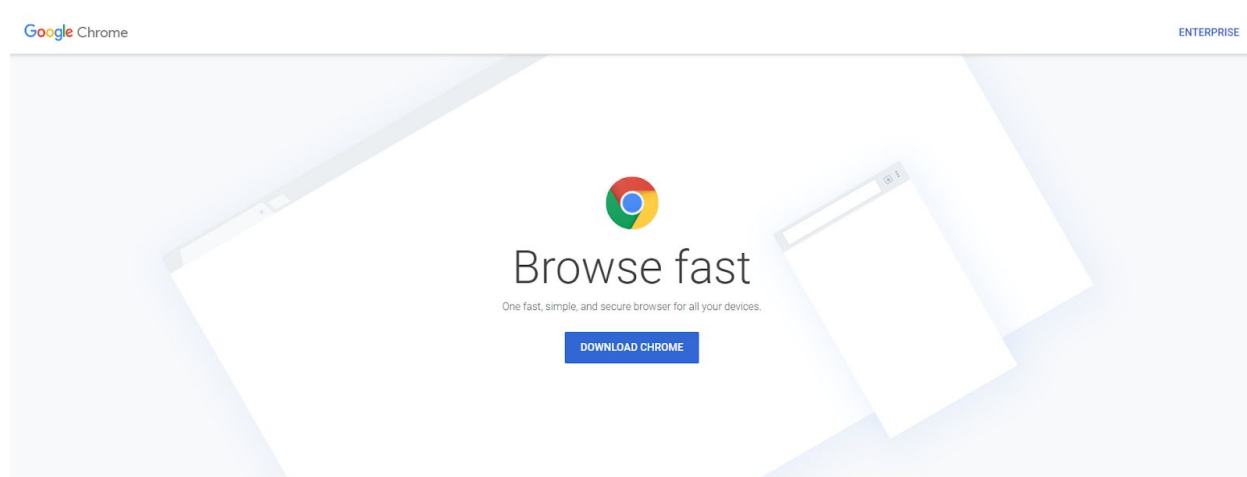
Configuring the Kiosk

Google Chrome provides the best viewing experience and also has a built-in *kiosk* mode which hides the address bar and prevents pop-ups and notifications from appearing on the screen. You will also want to add Kiosk to the 'startup applications' so that it starts when the computer is turned on.

Installing Google Chrome

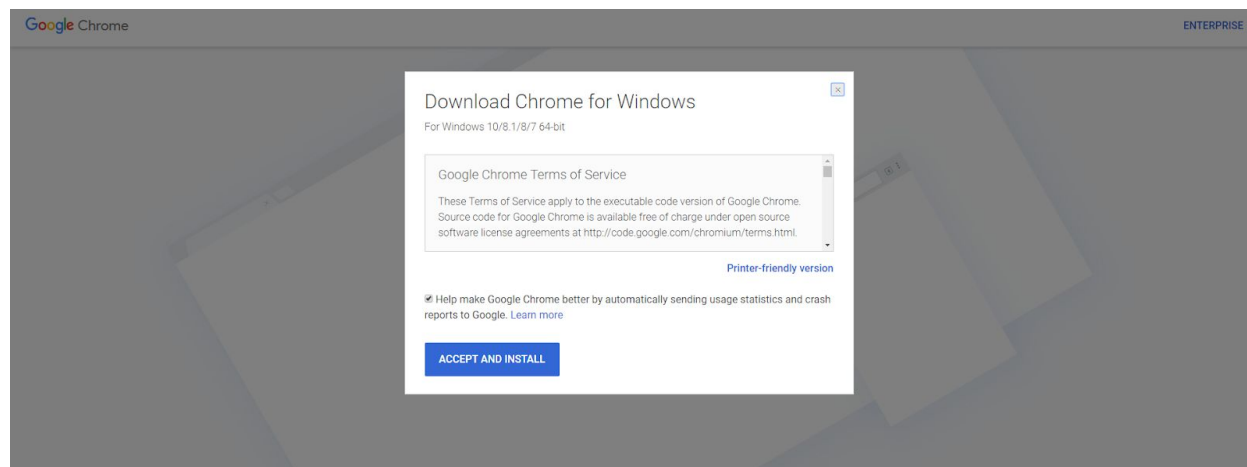
If you have Google Chrome on your computer you can skip ahead to creating the shortcut, If you do not already have Google Chrome on your computer, the latest version can be downloaded from the link below:

<https://www.google.com/chrome/browser/desktop/index.html>



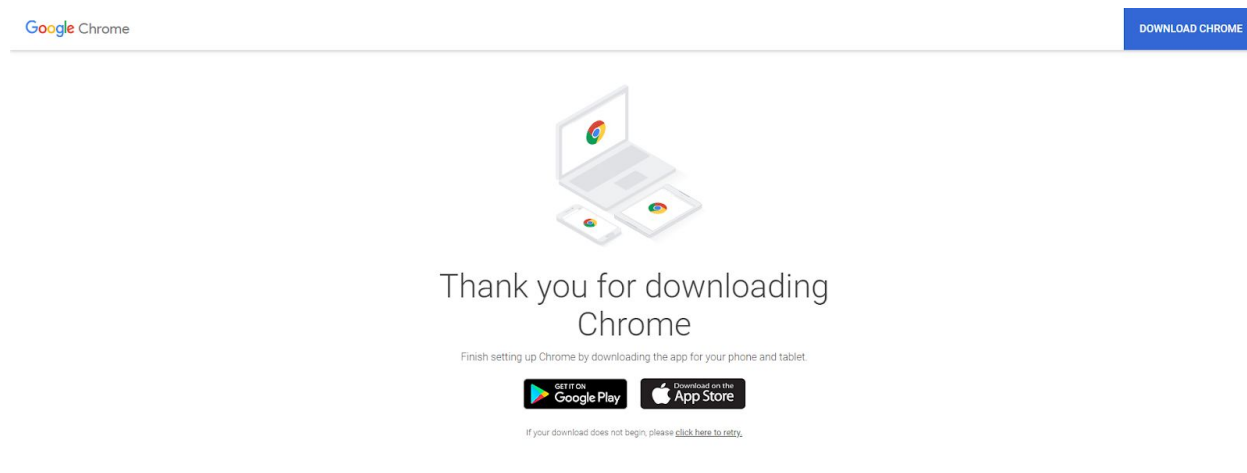
Google Chrome's Website

Click on **Download Chrome**, read the Terms of Service and then select **Accept and Install**



Google Chrome's Terms of Service and Install

Once Chrome has successfully installed, you should be brought to a confirmation page.



Google Chrome Installation Confirmation Page

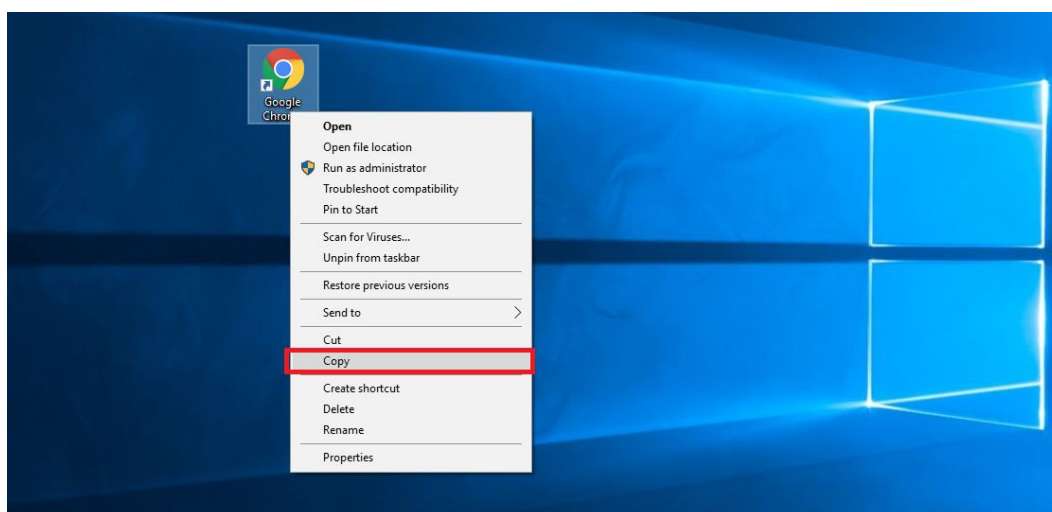
Creating a Shortcut to Kiosk

After Chrome has been installed you will want to create a shortcut to access the Winnipeg Transit Kiosk website using the *kiosk mode* in Google Chrome.

1. Create a copy of the Google Chrome shortcut

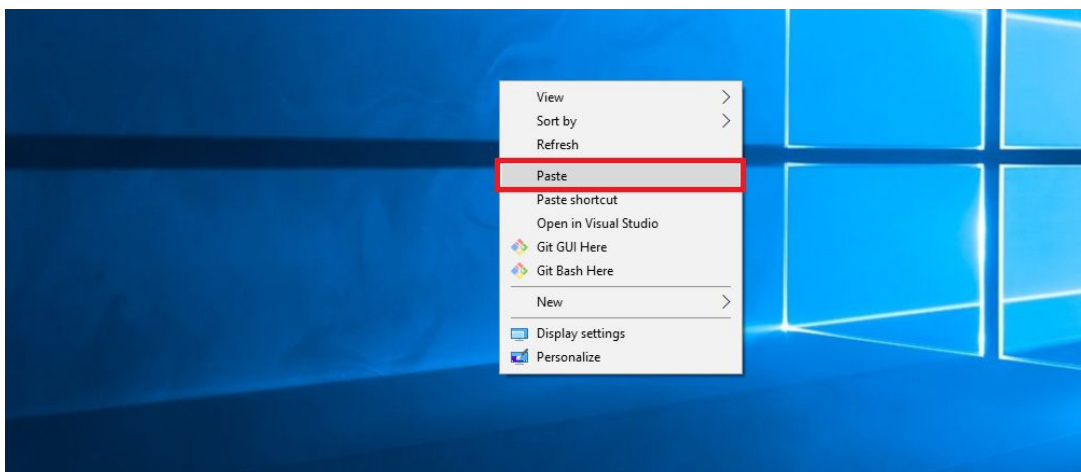
After installing Chrome there should be a shortcut on your desktop. You will want to create a copy of this that can be used to start the Kiosk application.

This can be down by selecting the Chrome shortcut, *right-clicking* and selecting **Copy** (Ctrl+C).



Copy the Google Chrome Shortcut

Now you can **Paste** it (*Ctrl+V*) to a new location on your desktop

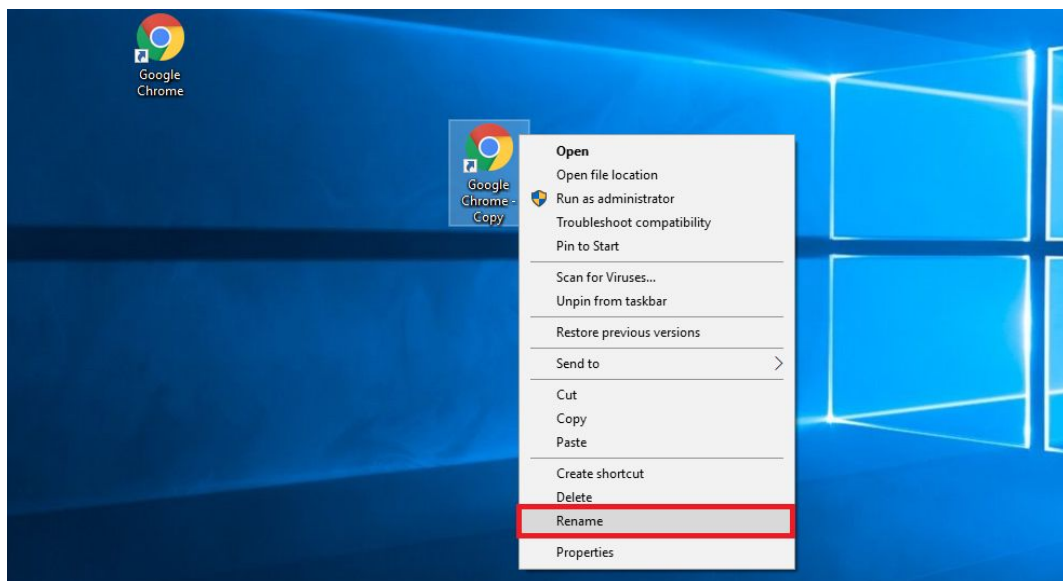


Paste the copy of the Google Chrome shortcut on the Desktop

Make sure when doing this that you select **Paste** and not *Paste shortcut*.

2. Rename the Shortcut

You will now want to edit the shortcut and give it a more recognizable name. This can be done by *right-clicking* on the shortcut and selecting **Rename**

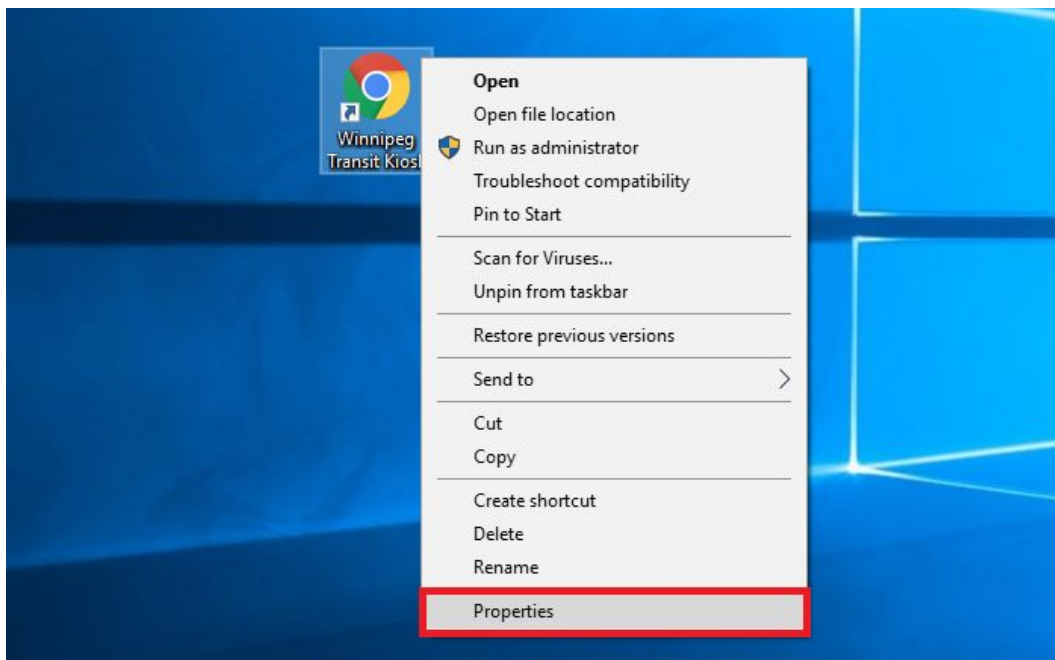


Rename the shortcut on the desktop

You can choose any name you like for the shortcut such as *Winnipeg Transit Kiosk*

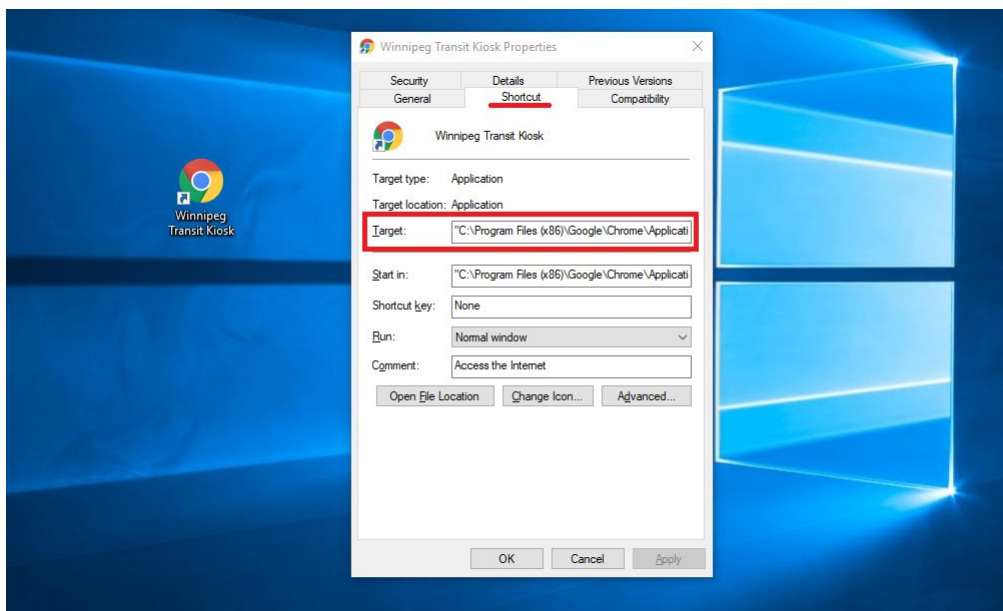
3. Edit the Shortcut Properties

You will need to edit the shortcut properties to configure Chrome to open the kiosk page automatically. Begin by *right-clicking* on the shortcut and selecting **Properties**



Accessing the shortcut Properties

You will see a **Target** field with the path to your Google Chrome installation folder.



The target path from the Shortcut tab in the Properties Dialog

You will need to modify the *Target path* and include the flag to tell Google Chrome to use *kiosk mode* and the *URL* below with the *Client Key* provided to you by Winnipeg Transit.

Add the following to the end of the *target path*:

-kiosk https://kiosk.winnipegtransit.com/display?key=[YOUR CLIENT KEY]

Example Shortcut Target

If your Client Key is **Kiosk123** and your initial *Target path* is:

C:\Program Files (x86)\Google\Chrome\Application\chrome.exe

You would set the shortcut Target to:

***C:\Program Files (x86)\Google\Chrome\Application\chrome.exe -kiosk
https://kiosk.winnipegtransit.com/display?key=Kiosk123***

Disabling Notifications in Google Chrome

You will want to disable Notifications in Chrome to prevent any pop ups or update messages from being shown while the kiosk is in use:

1. Open Google Chrome using the original Google Chrome shortcut
2. Open the **Overflow Menu** (:)
3. Click **Settings**
4. Expand the 'Advanced' settings at the bottom of the screen
5. Under the 'Privacy and security' category select 'Content settings'
6. Change the 'Notifications' settings

Slide the toggle to the left so it changes from 'Ask before sending' to 'Blocked'



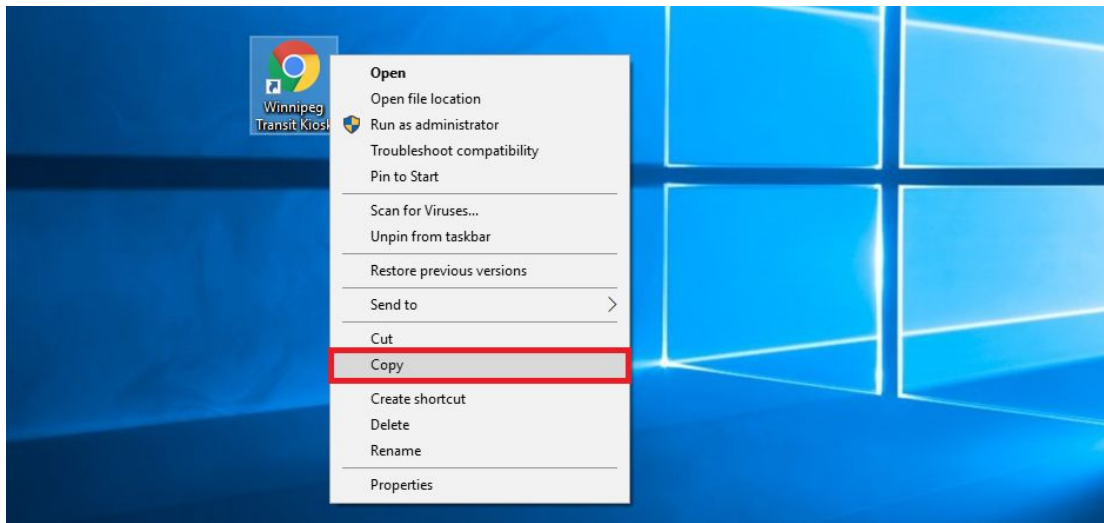
Google Chrome settings showing blocked Notifications

Starting Kiosk Automatically when the Computer Boots

Since your computer is already set to automatically log on with your user account, you will just need to add our Kiosk shortcut to the list of **Startup Programs** that are started by default after logging in.

1. Copy the Shortcut

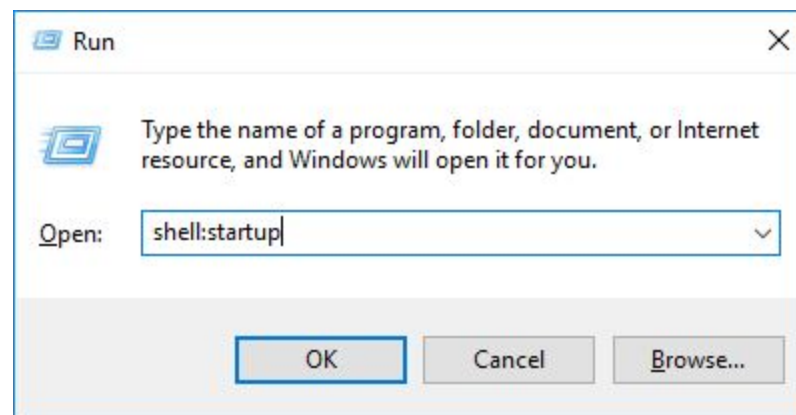
Go back to your desktop and select the **Winnipeg Transit Kiosk** shortcut, *right-click* and select **Copy**



Copying the Winnipeg Transit Kiosk shortcut to add it to the Clipboard

2. Open the Startup Applications Folder

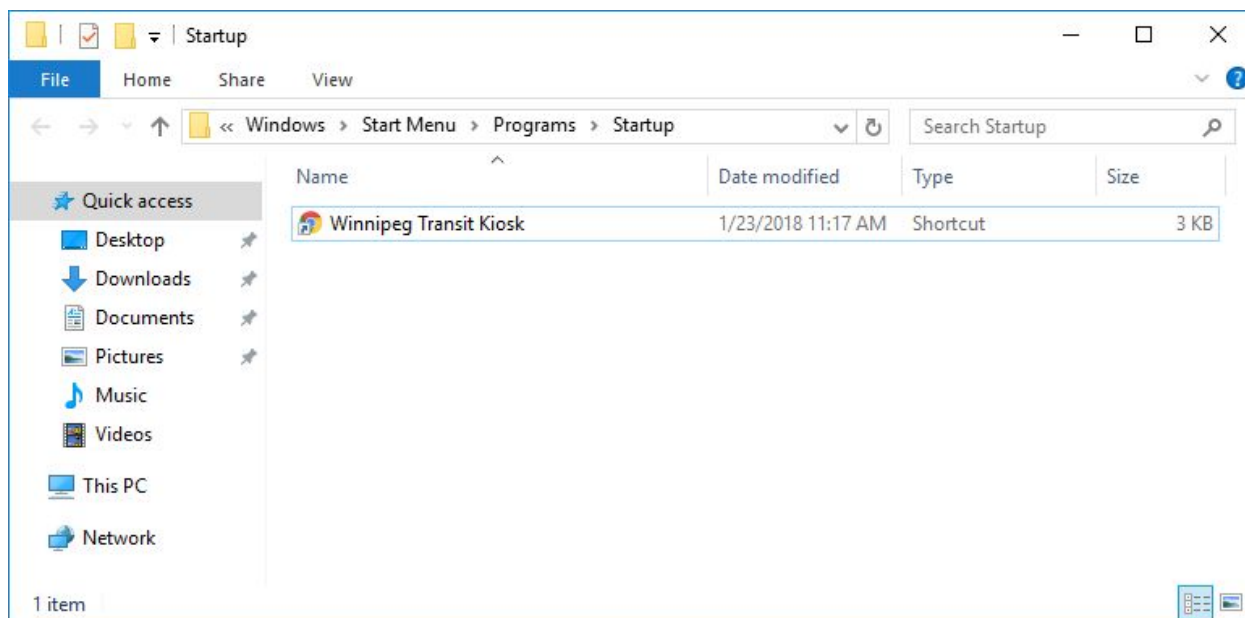
In order to open the Startup Applications folder you can press **Windows + R** to open the *Run Dialog*, from here enter **shell:startup** and click **OK**



Opening the Startup Applications directory from the Run Dialog

3. Add Your Custom Shortcut to the Startup Applications

You should now see the Startup Applications in Windows Explorer. You can paste your custom Winnipeg Transit Kiosk shortcut into this folder by *right-clicking* in the folder and selecting **Paste** (or using Ctrl+V)



Winnipeg Transit Kiosk shortcut in the Startup Applications Folder

Trying it Out

Your kiosk should be all configured and ready to go. To try out your new kiosk, you can simply reboot your computer.

If all of these steps worked, the computer should log on to the user account you provided and launch the Kiosk display in Google Chrome automatically.

You should see something like this:

Winnipeg Transit **← GRAHAM AT DONALD WESTBOUND** **13:39**

University of Winnipeg Service

| | | |
|--------|-----|-------------------------------|
| 11 min | 47 | Transcona to Balmoral Station |
| 13:55 | 160 | Downtown-UM to Downtown |
| 14:05 | 45 | Talbot to Downtown |
| 14:09 | 47 | Transcona to Balmoral Station |
| 14:13 | 160 | Downtown-UM to Downtown |
| 14:27 | 47 | Transcona to Balmoral Station |
| 14:31 | 160 | Downtown-UM to Downtown |
| 14:35 | 45 | Talbot to Downtown |
| 14:41 | 47 | Transcona to Balmoral Station |
| 14:49 | 160 | Downtown-UM to Downtown |

To South Winnipeg

| | | |
|-------|----|--|
| 3 min | 60 | Pembina to University of Manitoba |
| 5 min | 16 | Selkirk-Osborne to Plaza Dr via St. Vital Centre |
| 14:00 | 60 | Pembina to University of Manitoba |
| 14:00 | 16 | Selkirk-Osborne to Island Lakes |

To Northwest Winnipeg

| | | |
|-------|----|--------------------------------|
| 13:55 | 33 | Maples to Maples via Mapleglen |
| 14:11 | 33 | Maples to Maples via Jefferson |
| 14:26 | 33 | Maples to Maples via Mapleglen |
| 14:41 | 33 | Maples to Maples via Jefferson |
| 14:56 | 33 | Maples to Maples via Mapleglen |
| 15:08 | 35 | to Amber Trails |

To West & Southwest Winnipeg

| | | |
|-------|----|----------------------------------|
| due | 20 | Watt-Academy to Airport Terminal |
| 8 min | 18 | North Main-Corydon to Tuxedo |
| 13:54 | 66 | Grant to Downtown |
| 13:59 | 20 | Watt-Academy to Airport Terminal |
| 14:00 | 18 | North Main-Corydon to Tuxedo |

Upcoming times for Route 16

| | | |
|-------|--|--|
| 4 min | | Selkirk-Osborne to Plaza Dr via St. Vital Centre |
| 14:00 | | Selkirk-Osborne to Island Lakes via Southdale Centre |
| 14:17 | | Selkirk-Osborne to Plaza Dr via St. Vital Centre |

Destinations for 16 Selkirk-Osborne to Plaza Dr via St. Vital Centre
· St. Vital Centre

Spirit 1

WEEKDAY 11:00am - 3:30pm SATURDAY 11:00am - 5:30pm SUNDAY 12noon - 5:30pm

The DOWNTOWN Spirit FREE Bus Service

Easy access service

m.winnipegtransit.com

An example Kiosk Display from Downtown Winnipeg

Helpful Tips and Tricks

Resolving an Undefined Method 'Key' Error

If you get an error **Undefined Method 'Key'** the first time you try and run the Kiosk after following these steps check that you have entered your Client Key correctly in the shortcut's *Target Path*.

Exiting a Running Kiosk

When Google Chrome is running in *kiosk mode* it is displayed on top of other windows and it can be difficult to exit. To exit Chrome from *kiosk mode* you can press **Alt+F4** on your keyboard.

Preventing Kiosk from Starting Automatically

If you need to prevent Kiosk from starting automatically you can go back to the *Startup Applications* folder (enter **shell:startup** from the *run dialog*) and delete the shortcut.

Disabling Automatic Logon

If at any point you would like to disable this Autologon functionality, you can simply run the Autologon tool again, enter your username/password and click **Disable**.

Support

For support, please contact Winnipeg Transit at trn-kiosk-inquiries@winnipeg.ca.